

# PROSPECTUS



NEW ZEALAND  
SCHOOL OF  
ACUPUNCTURE  
AND TRADITIONAL  
CHINESE MEDICINE

ANCIENT MEDICINE,  
MODERN CHOICE

新西兰  
针灸  
中医药学



# Table of Contents

## CONTENTS

新西兰针灸中医药学院 WELCOME.....	3
About Us .....	4
NZ School of Acupuncture & TCM .....	5
Academic Pathway .....	6
Enrolment.....	7
Intake/Start of Courses .....	7
Enrolment Procedure .....	7
Acupuncture NZ .....	8
Master of Health Science (Chinese Medicine) .....	10
Postgraduate Certificate in Health Science (Chinese Medicine) .....	12
Bachelor of Health Science (Acupuncture).....	14
Diploma of Chinese Herbal Medicine .....	16
Diploma of Tuina .....	17
International Students .....	18
Contact Us .....	20

# 新西兰针灸中医药学院 WELCOME



You are taking a step towards making an important decision on your career path. It's a modern choice in health with ancestral eastern medicine.

At the New Zealand School of Acupuncture and Traditional Chinese Medicine (NZSATCM), we are committed to developing the potential of our students as qualified and competent practitioners in Acupuncture and Traditional Chinese medicine (TCM).

TCM with its emphasis on treating the whole person is increasingly becoming a selected therapy based on its effectiveness in enhancing wellness and alleviating diseases instead of solely relieving symptoms. As a growing healthcare profession, TCM offers opportunities for those seeking a rewarding career in caring for the health and wellbeing of people.

We strive to be the best that we can be, so that when you study with us, you have the foundations and support to reach your greatest potential.

In adhering to this philosophy, we are pleased that after our 2015 External Evaluation and Review (EER) by the *New Zealand Qualifications Authority (NZQA)* our efforts were acknowledged again by being awarded the highest ranking of **Category 1 Provider** with a *Highly Confident* rating in Educational Performance.

The schools 2017 Educational Performance indicators for course completions is 85% and qualification completions is 81%.

82% of our graduates obtained their Industry practicing certificate in 2017 reflecting a demand in the industry. Our statistics show that we have positive job outcomes of 94% in 2017.

We welcome you to embark on the journey to becoming a great TCM practitioner and look forward to getting to know you.

**NEW ZEALAND  
SCHOOL OF  
ACUPUNCTURE  
AND TRADITIONAL  
CHINESE MEDICINE**

ANCIENT MEDICINE  
MODERN CHOICE

**“Tell me, I will forget,  
show me, I may remember,  
involve me, and I will  
understand”**



Anita S Kumar



Janise Heow

**Anita S Kumar and Janise Heow**

Directors

## ABOUT US

As one of the fastest growing and widely accepted emerging health care professions, Traditional Chinese Medicine offers excellent opportunities for a career in this field as a primary care provider.

### NZSATCM

Established in 1989, we are the oldest educational institution of its kind in New Zealand. The School provides quality education enabling students to gain the knowledge and skills to reach their full potential in the specialised field of Traditional Chinese Medicine.

The School is NZQA registered and accredited with a Category 1 provider rating, the highest provider category offered by NZQA; being the New Zealand government crown entity tasked with providing national and international leadership in assessment & qualifications.

### CAMPUSES

NZSATCM operates from its two campuses in Auckland and Wellington.

### PROGRAMMES AND COURSES

- Master of Health Science
- Postgraduate Certificate in Health Science
- Bachelor of Health Science
- Diploma of Chinese Herbal Medicine
- Diploma of Tuina

### ENTRY CRITERIA

- minimum of age 18 at start of course
- NCEA 3 with 42 credits for domestic students or international equivalent
- For international students if English is not the first language:
  - For level 8/9 Degree, IELTS academic score of 6.5 with no band score lower than 6.
  - For level 7 Diploma or Degree, IELTS academic score of 6 with no band score lower than 5.5.



Our Schools range of diploma and degree programmes connects students to the work place by ensuring the curriculum is current and relevant, and the contents are of the right mix of theory and practical skills.

The academic staircase enables students to attain multiple qualifications by gaining credits at lower-level studies towards a higher-level qualification. The mode of study is classroom based. Some subjects may be offered by distance learning in an online environment.

The demand of the study will require students to apply themselves and put in the time and effort. A high level of personal discipline and time management are the ingredients for success.

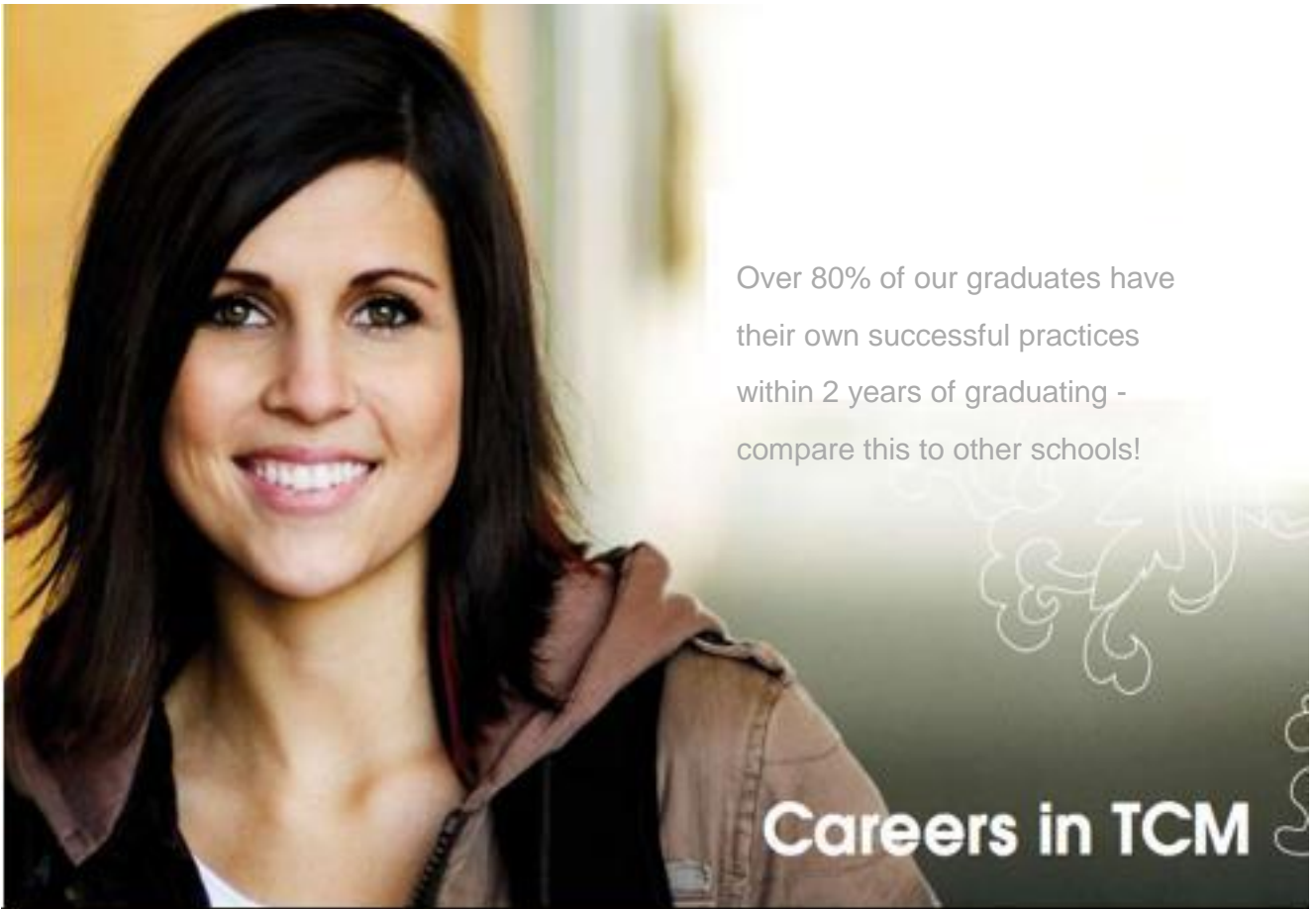
All undergraduate qualifications share some core components making it easier to study more than one qualification concurrently.





# NZ SCHOOL OF ACUPUNCTURE & TCM

**Celebrating nearly 30 years of education!**



Over 80% of our graduates have their own successful practices within 2 years of graduating - compare this to other schools!

## Careers in TCM

***If you're looking for a career in a highly sought-after health related field, we encourage you to seriously consider a career in Traditional Chinese Medicine.***

Traditional Chinese Medicine (TCM) with its emphasis on treating the whole person is becoming an increasingly sought-after therapy which has gained recognition based on its effectiveness in enhancing wellbeing and alleviating diseases instead of solely relieving symptoms.

TCM is widely accepted in New Zealand, revolutionising how we perceive and treat illness, challenging us to participate in and shape a new medical model that integrates the best that Eastern and Western philosophies have to offer.

As one of the fastest growing and widely accepted emerging healthcare professions TCM offers excellent opportunities that are recognized internationally for those seeking a career in this health field as primary care providers.

NZSACTM is New Zealand's leading TCM education provider dedicated to providing quality education in a support and stimulating environment. Our students graduate completely confident in their ability to accurately diagnose and successfully treat their patients. Another outstanding aspect to our curriculum is preparing students to set up their own ACC-registered practice.

We are also proud of the fact that over 80% of our graduates have established their own practice either in New Zealand or overseas within 2 years of graduating.

## PATHWAYS

### Programmes at NZSATCM

NZSATCM offers a dynamic curriculum combining in-depth classroom instruction with innovative collaborative learning activities and extensive hands-on clinical experience.

Our graduates have the theoretical knowledge, clinical skills and professional maturity to practice effectively as primary care, independent Acupuncture and related Oriental Medicine.

The School's range of certificate, diploma and degree programmes connect you to the workplace by ensuring the curriculum is current and relevant, and the contents are of the right mix of theory and practical skills. Our academic staircase enables you to attain multiple qualifications by gaining credits in lower-level studies towards a higher-level qualification.

The level of study is demanding and will require your time and best efforts to achieve the professional standard.

### Practice Management

A successful acupuncture practice requires an understanding of the business, ethics and legal issues of the acupuncture profession. In the practice management curriculum, you will create a **comprehensive business plan** that will serve as an on-going resource and road map in creating and marketing a successful practice. You will also learn about practical issues such as scope of practice, medical record keeping, insurance and billing practices.

### Career Opportunities

Graduates of our qualifications trend toward establishment of private practices of their own, join multidisciplinary practices or take advantage of flexible working hour opportunities as locums.

### Academic Staircase

When enrolled in the BHSC programme, you can complete a diploma in a related therapy such as Tuina or Chinese herbal medicine. To gain such a diploma, only the core courses of the diploma must be completed. You can study the core subjects of a diploma concurrently with the degree programme, or at a later stage of their study. Some choose to complete a diploma after graduation, to gain an additional qualification, or better still, to enrol in our Postgraduate or Masters programme.

# ENROLMENT

## Intake/Start of Courses

- Master of Health Science - Chinese Medicine
- Postgraduate Certificate in Health Science - Chinese Medicine
- Bachelor of Health Science- Acupuncture
- Diploma of Chinese Herbal Medicine
- Diploma of Tuina - Chinese Medical Massage

The above courses have intakes in February and July every year.

## Enrolment Procedure

### STEP 1: FIND A COURSE OF STUDY

This website provides information on the available courses of study in the **Programmes** tab. For additional information and advice, please call us on **0800 88 00 33**, or

Auckland: **+64 9 630 3546**

Wellington: **+64 4 473 9005**

### STEP 2: COMPLETE ENROLMENT FORM

When you have decided which course to apply for, complete the enrolment form. There are 3 easy ways to enrol. You can apply online or in person.

#### Online:

Post: PO Box 11076, Wellington 6142, New Zealand

Scan: [admin@nzsao.com](mailto:admin@nzsao.com)

#### In person:

Auckland 382C Manukau Road, Epsom

Wellington Level 10, Willbank House, 57 Willis Street, CBD

### STEP 3: ASSESSMENT

We will assess your application and contact you if you need to provide additional information. We will conduct an interview with you by phone or in person.

### STEP 4: OFFER OF PLACE

We will send you an offer of place if your application is successful. You will be advised if your application is unsuccessful.

### STEP 5: FEES PAYMENT

Timely payment of fees is expected. This can be done by internet banking, posting a cheque, or in person. If paying by student loan, you need to submit your loan application to Studylink ideally a month prior to course commencement date to confirm your eligibility and payment time frames.

**\* If you already have some relevant skills or qualifications, you can save yourself extra work and time by applying for recognition of prior learning (RPL). Contact us for more information.**

# ACUPUNCTURE NZ

Message from Angie Harding, Acupuncture NZ President.



Many of those who teach at the New Zealand School of Acupuncture and Traditional Chinese Medicine, as well as many graduates from the School, are members of Acupuncture New Zealand. We are very happy to welcome current students to also join us and become members of our organisation. Acupuncture NZ has a very strong commitment to support our members in the provision of safe and effective healthcare for all New Zealanders.

Recent surveys show that the general public are increasingly choosing acupuncture and Chinese medicine as their primary health care system. More and more people are seeking to take greater responsibility for their own health and are realising that acupuncture and Chinese medicine, with strong emphasis on the maintenance of wellbeing, can provide what they are looking for.

This is an exciting time in the development of our profession in New Zealand. At the same time as moving more into the realms of research and scientific evidence, we are also becoming more aware of the importance of the history and philosophy that underpins our medicine. As all of us who have studied Chinese medicine know, balance is essential in all aspects of life. As the ancient philosopher Laozi said in the Tao Te Ching: “Stay with the ancient Tao but move with the present”.

New Zealand has something of a name for being a country of innovation – there is no reason why we cannot lead the world into the integration of the very best that both eastern and western medicine have to offer. Current students of acupuncture and Chinese medicine have a great deal to look forward to.

## About Acupuncture NZ

First established in 1977 as the New Zealand Register of Acupuncturists, and with more than 700 members throughout New Zealand, Acupuncture NZ is the oldest and largest professional body representing acupuncturists in New Zealand. Acupuncture NZ members have been recognised as ACC treatment providers since 1990.

A member of the World Federation of Acupuncture and Moxibustion Societies as well as the World Federation of Chinese Medicine Societies, Acupuncture NZ also has strong affiliations with acupuncture associations in Australia, China, the United States and Britain.

Acupuncture NZ is very pleased to support students by providing free membership to all those enrolled in a full course of study in the field of acupuncture and/or Chinese Medicine in New Zealand. The benefits of student membership are as follows:



- Free membership with optional access to the extensive Acupuncture NZ library.
- Being a student member of a professional group of acupuncturists and, therefore, able to keep up with current information through receiving the Acupuncture NZ monthly newsletter.
- Access to the member's area of the Acupuncture NZ website and take advantage of being able to ask assistance from experienced practitioners.
- Student members can attend regional meetings as non-voting members.
- Fee reduction to attend the Acupuncture NZ annual conference (held every year in Wellington mid-August), seminars and workshops.



# MASTER OF HEALTH SCIENCE (CHINESE MEDICINE)

New Zealand Qualifications Authority (NZQA) Approved and Accredited

<b>PC3000</b>	<b>Master of Health Science (Chinese Medicine)</b>
<b>Level:</b>	<b>9</b>
<b>Credits:</b>	<b>180</b>
<b>Duration:</b>	<b>1.5 years full time or 3 years part-time study</b>
<b>Intake:</b>	<b>February, July, October</b>
<b>Location:</b>	<b>Auckland or Wellington (1-2-week block)</b>
<b>Delivery:</b>	<b>Blended Learning (block teaching, online supported study)</b>
<b>International:</b>	<b>IELTS academic score: 6.5 with no band score lower than 6.0</b>

The only travel is for a 1-2-week block in Auckland or Wellington at the beginning of the course in the first year. The block course ensures you get to know your teachers and fellow colleagues and have mastered the online learning platforms before you begin

- For the moment, the part-time study over three years (allows you to continue to work)
- Now available for study on a full-time basis
- Small class size to optimize learning and support
- Interactive, online style of learning with webinars and forums using the latest technology
- Access to journal databases
- Webinars allow you to learn from a range of experienced practitioners and researchers
- Webinars will be presented by a wealth of practitioners / researchers from New Zealand and guest lecturers from around the world
- Opportunity to explore own research project with access to supervisor support.

The Master of Health Science (Chinese Medicine) is a dynamic postgraduate course designed for TCM practitioners wishing to strengthen their knowledge and better integrate into the healthcare system.

You will have an opportunity to develop an evidence-based approach to practice and explore an appropriate subject of your interest in real depth. It is a taught Masters, only requiring attendance at a one-two week intensive study block, thereafter delivered primarily online using webinars, e-forums, online dissemination, Skype and e-mail supported learning and academic supervision.

The mandatory (Core) components equip students with the theoretical and practical knowledge to be able to successfully complete their dissertation in an area of clinical practice about which they are passionate.

The clinical modules electives (women's, musculoskeletal, mental health and herbal therapy), bring students into contact with expert practitioners in their fields, and introduce them to potential supervisors for their specialist topics.

The Masters is designed to enable advanced scholarship and clinical practice in any of the modalities (Acupuncture, Moxibustion, Tuina, Qigong or Chinese Herbal Medicine) that encompass Chinese Medicine.

Entry to the Herbal Medicine components will be limited to practitioners with appropriate qualifications in Chinese herbal medicine.

## Graduate Profile

The New Zealand School of Acupuncture and Traditional Chinese Medicine aims to create an educational environment which values scholarship, critical reflective thinking, life-long learning and professional development. The programme contributes to the postgraduate education of Chinese Medicine practitioners, preparing graduates who can contribute to knowledge and practice development within their own chosen clinical specialty.

Candidates will have the opportunity to:

- enhance their specialist clinical knowledge and skills
- interpret traditional knowledge and the modern research-based evidence base pertaining to the field of traditional Chinese Medicine
- explore concepts relating to the use of research and the creation of knowledge related to Chinese Medicine
- understand and use research models relating to the investigation and treatment of a range of diseases and conditions
- develop, apply and test advanced theoretical concepts in traditional Chinese Medicine
- critically analyse and debate research issues in clinical evaluations of acupuncture and Chinese Medicine
- undertake a research project exploring in depth a topic of their choice

The Programme aims to prepare students with the knowledge, skills and personal attributes for professional careers in specialty areas of Chinese Medicine at an advanced level.

## Career Opportunities

Master of Health Science (Chinese Medicine) graduates can practice as traditional Chinese medicine practitioners, or as researchers in the relevant areas. Traditional Chinese Medicine is used by over a quarter of the world's population and is the largest form of complementary medicine in New Zealand. This growing field is increasing career opportunities locally and internationally for NZSATCM graduates.

## Admission and Subject Information

- A Postgraduate Certificate in TCM.
- An applicant must have a Bachelors degree in a Chinese Medicine-related subject from a New Zealand tertiary institution or an equivalent overseas university as deemed appropriate by the Admissions panel or in exceptional circumstances, have qualifications or experience deemed by the Admissions panel to be the equivalent of the above.

## International Student Language Requirements

Level 9 Degree- IELTS academic score of 6.5 with no band score lower than 6.0

## Course Structure

Qualification for this award requires the successful completion of 180 credits including the three core modules listed below.

### Core modules - 9 Months (90 credits)

- MHSARM801: Advanced Research Methods 1 - 30 credits
- MHSARM802: Advanced Research Methods 2 - 15 credits
- MHS802 Contemporary Alternative Medicine - 15 credits
- MHSIRP: Independent Research Project - 15 credits
- MHSCSE: Clinical Specialties Electives - 15 credits

### Dissertation - 9 months (90 credits)

- MHS999: Research and Thesis - 90 credits

# POSTGRADUATE CERTIFICATE IN HEALTH SCIENCE (CHINESE MEDICINE)

New Zealand Qualifications Authority (NZQA) Approved and Accredited

**PC2429 Postgraduate Certificate in Health Science (Chinese Medicine)**

**Level: 8**

**Credits: 60**

**Duration: 9 months (600 hours)**

**Intake: January, March and July**

**Location: Auckland or Wellington (1-2week block)**

**Delivery: Blended Learning (block teaching, online supported study)**

**International: IELTS academic score: 6.5 with no band score lower than 6.0**

## Course Content

The Postgraduate Certificate in Health Science (Chinese Medicine) will enable advanced scholarship and clinical practice in any of the modalities (Acupuncture, Moxibustion, Tuina, Qigong or Chinese herbal medicine) that encompass Chinese Medicine.

This course offers a comprehensive academic programme, which contains the following modules with their credit values:

- Advanced Research 1 - 30 credits
- Advanced Research 2 - 15 credits
- Contemporary Alternative in CAM - 15 credits

## Pathway to Further Education

This 60-credit qualification at level 8 offers advanced understanding of research methods appropriate to the evaluation of Chinese Medicine, as well as excellent skills in finding and appraising research literature and relating it to their practice.

Graduates of the Postgraduate Certificate in Health Science (Chinese Medicine) will be equipped with knowledge and skills to enable them to function at an advanced level within practice. It enhances the acupuncture knowledge base and informs clinical practice enabling high quality, first contact, primary-care providers as well as providing the pathway to pursue further studies into postgraduate, Masters and PhD studies at NZSATCM's programmes or have the opportunity to undertake Master's and Doctorate studies at the following partner institutions:

- Southern Medical University, Guangzhou
- Guangzhou University of Chinese Medicine
- Hubei University of Chinese Medicine, Wuhan.

### **Career Opportunities**

Graduates will in particular, have an advanced understanding of research methods appropriate to the evaluation of Chinese Medicine, as well as excellent skills in finding and appraising research literature and relating it to their practice.

Graduates of the Postgraduate Certificate in Health Science (Chinese Medicine) will be equipped with knowledge and skills to enable them to function at an advanced level within practice.

### **Entry Criteria**

In order to be admitted to the Postgraduate Certificate, an applicant shall normally have completed one of the following requirements:

- Must hold a qualification of, at least, a recognised Bachelors Degree in Acupuncture or Bachelor's Degree in Chinese Medicine; or hold a Postgraduate Certificate awarded by NZSATCM
- International students must have achieved an academic IELTS of 6.5 with no band less than 6.0
- Must have completed 500 hours of TCM clinical practice
- Must have obtained a satisfactory evaluation after an interview conducted by the school's admission panel

### **Course Programme details**

#### **Semester One**

PGCARM801 Advanced Research Methods Part 1 (30 credits)

PGCCAM801 Contemporary Alternative in CAM (15 credits)

#### **Semester Two**

PGCARM802 Advanced Research Methods Part 2 (15 credits)



# BACHELOR OF HEALTH SCIENCE (ACUPUNCTURE)

New Zealand Qualifications Authority (NZQA) Approved and Accredited

<b>PC9792</b>	<b>Bachelor of Health Science (Acupuncture)</b>
<b>Level:</b>	<b>7</b>
<b>Credits:</b>	<b>480</b>
<b>Duration:</b>	<b>4 years full-time study and part-time study available</b>
<b>Intake:</b>	<b>February and July</b>
<b>Location:</b>	<b>Wellington and Auckland</b>
<b>Delivery</b>	<b>In-house and online supported study (blended learning)</b>

## Course Content

- TCM theory
- TCM practical
- Biomedical health sciences
- Professional studies
- Clinical practice
- Research

The first and second years of study provide the foundation in the required biological, clinical, professional knowledge and skill base. This is enhanced through clinical observation and assisting in the clinic.

The third and fourth years are the clinical years of study where student clinicians offer consultation and treatment services to patients under the supervision of qualified, experienced staff acupuncture practitioners. They are also introduced to research principles and methodologies in year four.

## Pathway to further education

This level 7, four-year 480 credit qualification was the first programme of its kind for New Zealand in 2007. It offers hands on training in acupuncture as well as moxa, cupping and gua sha. Developed to meet the continuing educational needs of the large number of acupuncture diploma graduates and people who want to become acupuncturists. It enhances the acupuncture knowledge base and informs clinical practice enabling high quality, first contact, primary-care providers as well as providing the pathway to pursue further studies into postgraduate, Masters and PhD studies at NZSATCM's programmes or have the opportunity to undertake Master's and Doctorate studies at the following partner institutions:

- Southern Medical University, Guangzhou
- Guangzhou University of Chinese Medicine
- Hubei University of Chinese Medicine, Wuhan.

## Career Opportunities

Graduates of our Bachelor degree trend toward establishing private practices of their own, join or establish multidisciplinary practices or take advantage of flexible working hour opportunities as locums in existing practices.

## Entry Requirements

Proof of NZ citizenship or permanent residency

Students must be 18 years or older and meet literacy standards for tertiary entrance NZ students.

Must have obtained 42 credits in NCEA L3 (or equivalent)

International students must meet NZ visa requirements and IELTS 6.0

## Course Programme details

### Semester one

BSC-RES-101: Academic writing  
BSC-TCMP-101: TCM practical  
BSC-TCMT-101: TCM theory  
BSC-WMS-101: Anatomy, physiology  
BSC-WMS-111: Basic microbiology

### Semester one

BSC-CLN-201: Clinical assistant  
BSC-TCMP-201: TCM practical  
BSC-TCMT-201: TCM theory  
BSC-TCMT-211: Acupuncture point functions  
BSC-WMS-201: Biomedical pathology

### Semester one

BSC-CLN-301: Student clinic  
BSC-DDX-301: Differential diagnosis  
BSC-TCMP-301: Musculoskeletal treatment  
BSC-TCMT-301: Clinical patterns  
BSC-WMS-301: Diagnosis, referral

### Semester one

BSC-CLN-401: Student clinic  
BSC-DDX-401: Differential diagnosis  
BSC-PROF-401: Professional issues  
BSC-RES-401: Research principles  
BSC-TCMT-401: Major Chinese classics

### Year one

#### Semester two

BSC-CLN-102: Introduction to clinic  
BSC-TCMP-102: TCM practical  
BSC-TCMT-102: TCM theory  
BSC-WMS-102: Anatomy, physiology  
BSC-WMS-112: Human development

### Year two

#### Semester two

BSC-CLN-202: Clinical assistant  
BSC-TCMP-202: TCM practical  
BSC-TCMP-212: Musculoskeletal assessment  
BSC-TCMT-202: TCM theory  
BSC-WMS-202: Biomedical pathology

### Year three

#### Semester two

BSC-CLN-302: Student clinic  
BSC-DDX-302: Differential diagnosis  
BSC-TCMP-302: Tuina  
BSC-TCMT-302: Clinical patterns  
BSC-WMS-302: Pharmacology

### Year four

#### Semester two

BSC-CLN-402: Student clinic  
BSC-DDX-402: Differential diagnosis  
BSC-RES-402: Research methods  
BSC-SBM-402: Clinic management  
BSC-TCMT-402: Chinese medical specialties

# DIPLOMA OF CHINESE HERBAL MEDICINE

New Zealand Qualifications Authority (NZQA) Approved and Accredited

<b>PC2448</b>	<b>Diploma of Chinese Herbal Medicine</b>
<b>Level:</b>	<b>7</b>
<b>Credits:</b>	<b>369</b>
<b>Duration:</b>	<b>3 years part-time study concurrent with Bachelor of Health Science (Acupuncture)</b>
<b>Intake:</b>	<b>February and July</b>
<b>Location:</b>	<b>Auckland</b>
<b>Delivery:</b>	<b>In-house and online supported study (blended learning)</b>

This two-year level 7 program of study comprises TCM medical science, Western biosciences and Chinese herbal medicine specific studies. The programme engages students in an in-depth exploration of the clinical usage of approximately 200 of the most useful Chinese herbal formulas. This diploma is for students who wish to become Chinese herbal medicine practitioners. Clinical Herbs dispensary is now used for the students to gain training.

## Career Opportunities

Graduates of our CHM diploma combine it with their BHSC Acupuncture and or Tuina qualifications and trend toward establishing private practices of their own, join or establish multidisciplinary traditional Chinese medicine private practices.

## Entry Criteria

- Enrolments are open to Year 2 and above NZSATCM BHSC students
- Students that have completed the BHS Acupuncture with NZSATCM can also study the programme on a part time basis.

## Course Programme details

### Semester one

H-HBSP-101: Materia medica  
H-PROF-101: Professional studies  
H-TCMT-101: TCM theory  
H-WMS-101: Anatomy, physiology  
H-WMS-111: Microbiology

### Semester one

H-CLN-201: Clinical assistant  
H-DDX-201: Diagnosis  
H-HBSP-201: Classical formulae  
H-TCMT-201: TCM theory  
H-WMS-201: Pathology

### Semester one

H-CLN-301: Clinical training  
H-DDX-301: Diagnosis  
H-HBSP-301: Modern formulating  
H-TCMT-301: Clinical patterns  
H-TCMT-311: Chinese medical classics  
H-WMS-301: When to refer

### Year one

#### Semester two

H-HBSP-102: Materia medica  
H-CLN-102: Observation  
H-TCMT-102: TCM theory  
H-WMS-102: Anatomy, physiology  
H-WMS-112: Human development

### Year two

#### Semester two

H-CLN-202: Clinical assistant  
H-DDX-202: Diagnosis  
H-HBSP-202: Classical formulae  
H-TCMT-202: TCM theory  
H-WMS-202: Pathology

### Year three

#### Semester two

H-CLN-302: Clinical training  
H-DDX-302: Diagnosis  
H-HBSP-302: Modern formulating  
H-SBM-302: Clinical management  
H-TCMT-302: Clinical patterns  
H-WMS-302: Pharmacology

# DIPLOMA OF TUINA

New Zealand Qualifications Authority (NZQA) Approved and Accredited

<b>PC3663</b>	<b>Diploma of Tuina (Chinese Medical Massage)</b>
<b>Level:</b>	<b>7</b>
<b>Credits:</b>	<b>271</b>
<b>Duration:</b>	<b>2 years part-time study concurrent with BHSC (Acupuncture) programme</b>
<b>Intake:</b>	<b>February and July</b>
<b>Location:</b>	<b>Auckland</b>
<b>Delivery:</b>	<b>In-house and online supported study (blended learning)</b>

Tuina is Chinese medical massage. The qualification is presented in a two-year program of study comprising TCM medical science, Western biosciences, Tuina specific theoretical studies and manual manipulation techniques. This diploma can complement acupuncture bachelor study or lead to stand alone practice of Chinese medical massage. Our aim is to explore the theoretical and practical knowledge of Chinese medical massage in order to prepare graduates to practice tuina in a contemporary primary healthcare context alongside acupuncture and CHM, as part of the network of primary healthcare providers, tailoring treatments to the requirements of patients.

## Career Opportunities

Graduates of our diploma of Tuina trend toward combining it with the Bachelor of Acupuncture and or CHM diploma in practice. They establish private practices of their own, join or establish multidisciplinary practices or take advantage of flexible working hour opportunities as locums in existing Tuina practices.

## Entry Requirements

- Enrolments are open to Year 2 and above NZSATCM BHSC students
- Students that have completed the BHSC Acupuncture with NZSATCM can also study the programme on a part time basis.

## Course Programme details

### Year 1

#### Semester 1

T-PROF-101: Professional Studies  
T-TCMT-101: TCM Theory  
T-TUIP-101: Tuina  
T-WMS-101: Anatomy, Physiology  
T-WMS-111: Microbiology

#### Semester 2

T-CLN-102: Clinical Assistant  
T-TCMT-102: TCM Theory  
T-TUIP-102: Tuina  
T-WMS-102: Anatomy, Physiology  
T-WMS-112: Human Development

### Year 2

#### Semester 1

T-CLN-201: Clinical Training  
T-DDX-201: Diagnosis  
T-TCMT-201: TCM Theory  
T-TUIP-201: Tuina  
T-WMS-201: Pathology

#### Semester 2

T-CLN-202: Clinical Training  
T-DDX-202: Diagnosis  
T-TCMT-202: TCM Theory  
T-TUIP-202: Tuina  
T-WMS-202: Pathology

# INTERNATIONAL STUDENTS

## You Need to Know About:

- Language Requirements
- Fees protection
- Immigration
- Medical insurance
- Code of practice



### Language Requirements

The New Zealand Qualifications Authority requires English language proficiency indicated as follows:

- For a level 8/9 Degree, IELTS academic score of 6.5 with no band score lower than 6.
- For a level 7 Diploma or Degree, IELTS academic score of 6 with no band score lower than 5.5.

### Fees Protection

The New Zealand Government requires that all New Zealand Qualifications Authority registered private training establishments (education providers) must protect all student fees paid to them in advance. This means that in the unlikely event that the education provider has to close before the completion of the student's course, the remainder of the student fees will be protected. Fees protected within a trust account means that the student will have the choice to receive any remaining fees back or have them paid directly to an alternative education provider.

The School arranges fee protection with Public Trust. Fees deposited and protected by Public Trust are held in the Trust's common funds. Details of fee protection with Public Trust are on its website at: [publictrust.co.nz](http://publictrust.co.nz)

### Immigration

International students must meet certain visa requirements while studying in New Zealand. Information on visa application, variation to visa conditions and rights to employment is available on the immigration New Zealand website at: [immigration.govt.nz](http://immigration.govt.nz)

### Medical Insurance

International students are not entitled to publicly funded health services while in New Zealand unless they are a resident or citizen of Australia, or a national of the United Kingdom in New Zealand, or the holder of a temporary permit that is valid for two years or more.

If a student does not belong to one of these categories and receives medical treatment while in New Zealand, they will be liable for the full costs of that treatment.



The School cannot be held responsible for any sickness, injury, damage or loss incurred by the student within the School or on the School's activities or tours, or in the student's place of accommodation. Insurance cover is compulsory by law for all international students.

Students are advised to take up travel/medical insurance prior to arrival in New Zealand. This gives insurance cover for travel to New Zealand and the cost of medical treatment in New Zealand for the duration of study at the School.

Depending on illness, medical history and the policy type, a student may receive refund of all or most of their medical costs from the insurance organisation.

### **International Code of Practice**

The Code of Practice for the Pastoral Care of International Students sets out the minimum standards of advice and care that are expected of educational providers with respect to international students. The Code applies to pastoral care and provision of information only, and not to academic standards.

The School is a signatory to, and has agreed to observe and be bound by, the Code of Practice for the Pastoral Care of International Students published by the Ministry of Education. Copies of the Code are available on request from the School or from the New Zealand Ministry of Education website at:

[education.govt.nz](http://education.govt.nz)

As a supportive and friendly place to learn, the School is a nurturing ground for international students, pursuing a career in acupuncture and TCM.

We provide quality support services to help international students adjust to living and studying in New Zealand. Learning support and counseling services are available to facilitate the success of the student.



The appreciation of acupuncture as a discipline for delivering healing grew as Sejal Patel started her study. It took a leap after she received acupuncture treatment for a longstanding problem.

"It worked. The wonderful thing was this convinced my mother to also receive treatment and she felt better. I know my mother had fully accepted my new career choice when I heard her telling extended family members all about acupuncture," said Sejal.

"Looking back, I think my mother had contributed to the choice I made. Her use of traditional Indian home remedies like ginger, tumeric and tulsi had given me confidence in alternative medicines from a young age."

# CONTACT US



## WELLINGTON

Level 10  
Crowe Howarth  
House  
57 Willis St  
PO Box 11076  
Wellington 6142  
New Zealand

### Phone

+64 4 473 9005

## AUCKLAND

Building C  
382 Manukau Road  
PO Box 26382  
Epsom  
Auckland 1023  
New Zealand

### Phone

+64 9 630 3546

## Email

[admin@nzsao.com](mailto:admin@nzsao.com)

## Website

[acupuncture.ac.nz](http://acupuncture.ac.nz)



NEW ZEALAND  
SCHOOL OF  
ACUPUNCTURE  
AND TRADITIONAL  
CHINESE MEDICINE

**ANCIENT MEDICINE | MODERN CHOICE**

